

4

3

2

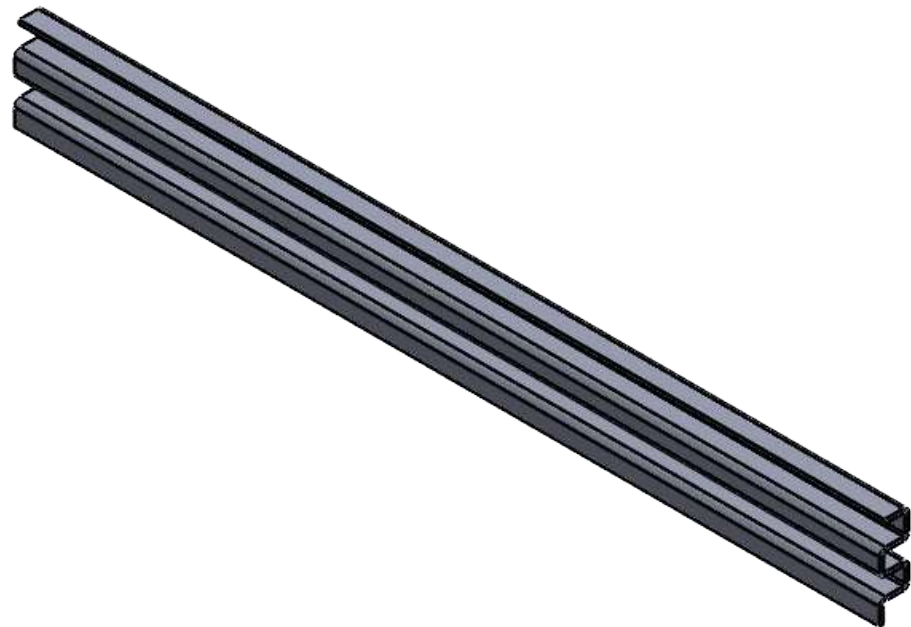
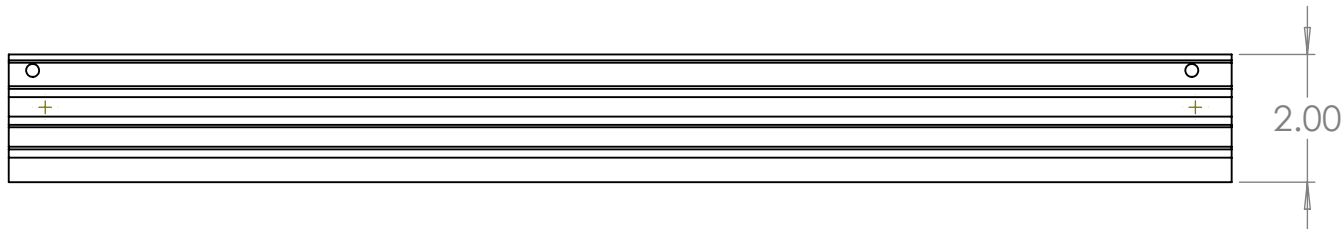
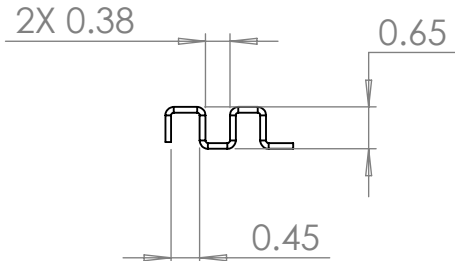
1

B

B

A


A

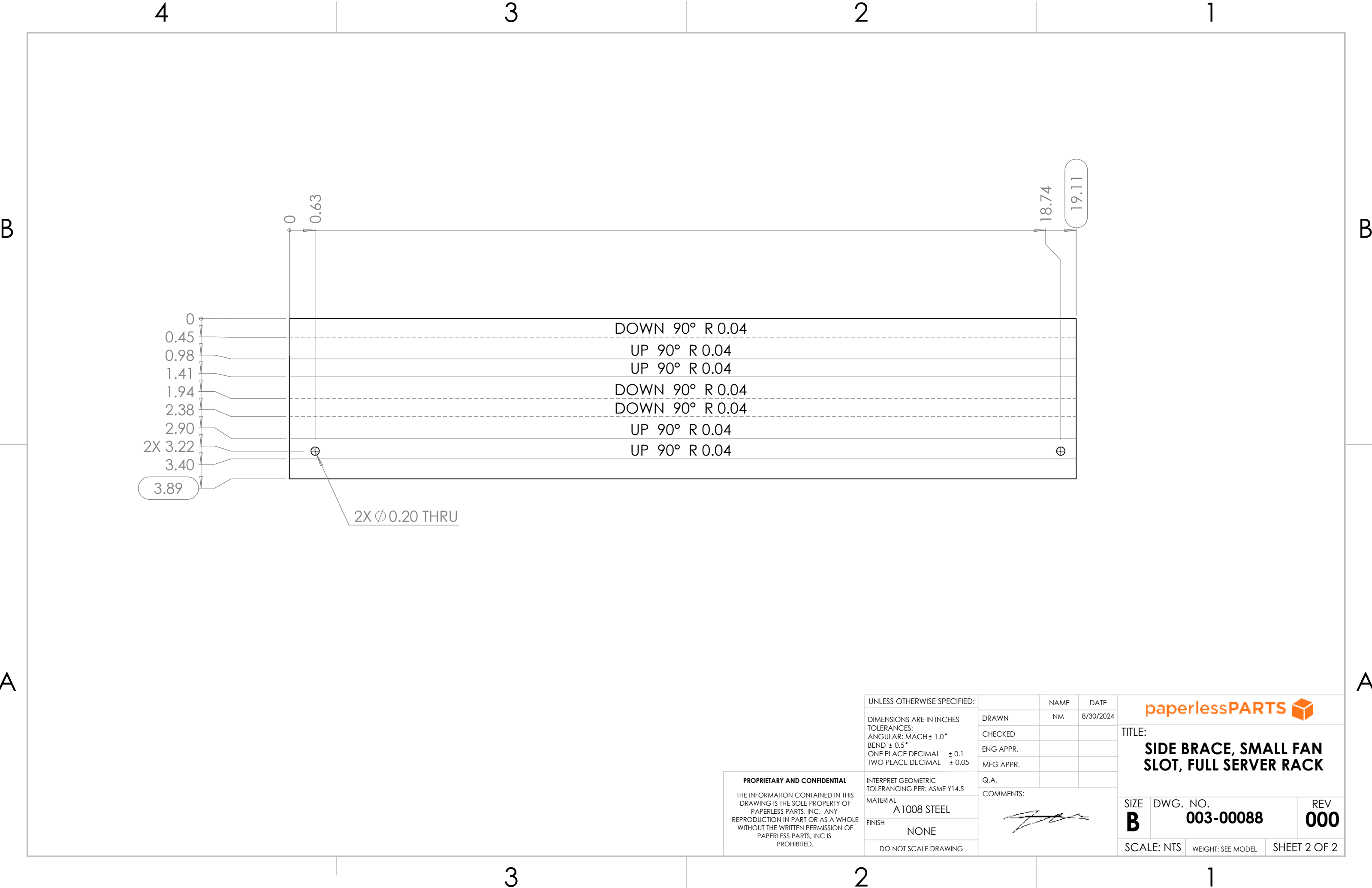


- NOTES: UNLESS OTHERWISE SPECIFIED.
1. PARAMETRIC MODEL. ALL DIMENSIONS FURTHER SPECIFIED IN 003-00088.
 2. FLAT PATTERN FOR PART SPECIFIED ON LAST SHEET OF DRAWING.
 3. PART SHALL BE FREE OF ANY SHARP EDGES AND BURRS.
 4. PART TO BE CLEANED OF ALL OIL AND DEBRIS.
 5. MATERIAL: A1008 STEEL
 6. FINISH: NONE
 7. GAUGE: 13
 8. PART SHALL NOT BE MODIFIED BY ANY PARTY OUTSIDE PAPERLESS PARTS, INC UNLESS WRITTEN OR EXPRESS APPROVAL HAS BEEN PERMITTED FOR THE PART.


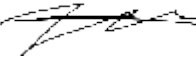
PROPRIETARY AND CONFIDENTIAL
THE INFORMATION CONTAINED IN THIS
DRAWING IS THE SOLE PROPERTY OF
PAPERLESS PARTS, INC. ANY
REPRODUCTION IN PART OR AS A WHOLE
WITHOUT THE WRITTEN PERMISSION OF
PAPERLESS PARTS, INC IS
PROHIBITED.

UNLESS OTHERWISE SPECIFIED:	
DIMENSIONS ARE IN INCHES	
TOLERANCES:	
ANGULAR: MACH $\pm 1.0^\circ$	
BEND $\pm 0.5^\circ$	
ONE PLACE DECIMAL	± 0.1
TWO PLACE DECIMAL	± 0.05
INTERPRET GEOMETRIC	
TOLERANCING PER: ASME Y14.5	
MATERIAL	
A 1008 STEEL	
FINISH	
NONE	
DO NOT SCALE DRAWING	

			
TITLE:			
SIDE BRACE, SMALL FAN SLOT, FULL SERVER RACK			
SIZE	DWG. NO.	REV	
B	003-00088	000	
SCALE: NTS	WEIGHT: SEE MODEL	SHEET 1 OF 2	



PROPRIETARY AND CONFIDENTIAL
THE INFORMATION CONTAINED IN THIS
DRAWING IS THE SOLE PROPERTY OF
PAPERLESS PARTS, INC. ANY
REPRODUCTION IN PART OR AS A WHOLE
WITHOUT THE WRITTEN PERMISSION OF
PAPERLESS PARTS, INC IS
PROHIBITED.

UNLESS OTHERWISE SPECIFIED:		NAME	DATE	<div></div>		
DIMENSIONS ARE IN INCHES		DRAWN	NM	8/30/2024	TITLE: SIDE BRACE, SMALL FAN SLOT, FULL SERVER RACK	
TOLERANCES:		CHECKED				
ANGULAR: MACH ± 1.0°		ENG APPR.				
BEND ± 0.5°		MFG APPR.				
ONE PLACE DECIMAL ± 0.1		Q.A.				
TWO PLACE DECIMAL ± 0.05		COMMENTS:			SIZE DWG. NO. REV B 003-00088 000	
INTERPRET GEOMETRIC TOLERANCING PER: ASME Y14.5						
MATERIAL						
A1008 STEEL						
FINISH						
NONE		SCALE: NTS			WEIGHT: SEE MODEL	SHEET 2 OF 2
DO NOT SCALE DRAWING						